



www.rjc.sa - info@rjc.sa

# ركاز الجودة للمقاولات العامة Rakaz Al Joudah General Contracting

C.R. No: 2050175808

VAT NO: 301143888700003

7279 Al Khobar Al Janubiyah

5207 Al khobar 34622

Saudi Arabia

السجل التجاري: ٢٠٥٠١٧٥٨٠٨

الرقم الضريبي: ٣٠١١٤٣٨٨٨٧٠٠٠٣

٧٢٧٩ الخبر جنوبية

٥٢٠٧ الخبر ٣٤٦٢٢

المملكة العربية السعودية

## Datasheet

### LGMG Boom Lift Diesel Articulating Lift Model T22J for rent

Brand: LGMG



#### Short Description

**LGMG T22J Diesel Articulating Boom Lift (Rental)** — Rugged 4x4 rough-terrain boom with a versatile jib for precise up-and-over access. Delivers smooth proportional control and dependable outdoor performance for construction and facility maintenance. Available for short- or long-term rental across Saudi Arabia.



www.rjc.sa - info@rjc.sa

# ركاز الجودة للمقاولات العامة Rakaz Al Joudah General Contracting

C.R. No: 2050175808

VAT NO: 301143888700003

7279 Al Khobar Al Janubiyah  
5207 Al khobar 34622  
Saudi Arabia

السجل التجاري: ٢٠٥٠١٧٥٨٠٨

الرقم الضريبي: ٣٠١١٤٣٨٨٨٧٠٠٠٠٣

٧٢٧٩ الخبر جنوبية  
٥٢٠٧ الخبر ٣٤٦٢٢  
المملكة العربية السعودية

## Full Description

### LGMG T22J Diesel Articulating Boom Lift (Rental)

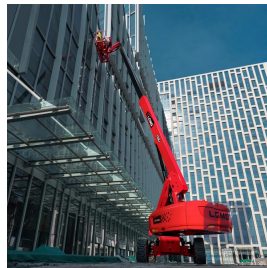
The **LGMG T22J Diesel Articulating Boom Lift** is designed to provide safe and efficient access to hard-to-reach areas. With a maximum platform height of 20 meters and a working height of 22 meters, it is ideal for construction, industrial maintenance, and installation projects requiring versatile reach and reliability.

Built with a powerful **diesel engine** and **4x4 rough-terrain drive**, the T22J ensures excellent performance on uneven surfaces. Its articulating arm combined with a jib allows operators to maneuver up, over, and around obstacles, providing flexibility in challenging environments.

- Maximum working height: **22 m**
- Maximum horizontal outreach: **17 m**
- Platform capacity: **250 kg**
- Powerful diesel engine with rough-terrain 4x4 drive
- Articulating boom with jib for precise positioning
- Proportional controls for smooth operation
- Certified for safety and reliability

Whether you need it for short-term or long-term rental, the LGMG T22J is a dependable solution for working at height in demanding outdoor conditions across Saudi Arabia.

## Images





www.rjc.sa - info@rjc.sa

# ركاز الجودة للمقاولات العامة

## Rakaz Al Joudah General Contracting

C.R. No: 2050175808

VAT NO: 301143888700003

7279 Al Khobar Al Janubiyah

5207 Al khobar 34622

Saudi Arabia

السجل التجاري: ٢٠٥٠١٧٥٨٠٨

الرقم الضريبي: ٣٠١١٤٣٨٨٨٧٠٠٠٣

٧٢٧٩ الخبر جنوبية

٥٢٠٧ الخبر ٣٤٦٢٢

المملكة العربية السعودية

## Technical Specifications

### LGMG Boom Lift Diesel Articulating Lift Model T22J for rent

Specification	Value
Model	T22J (TTZJ)
Work Height Max.	23.8 m
Platform Height	21.8 m
Horizontal Outreach	17.5 m
Below Ground Reach	2.3 m
Platform Length	2.44 m
Platform Width	0.9 m
Platform Capacity	300kg (unrestricted) / 450kg (restricted)
Stowed Length	10.6 m
Overall Width	2.49 m
Stowed Height	2.79 m
Wheelbase	2.51 m
Ground Clearance	0.395 m
Max. Platform Occupants	2 (300kg) / 3 (450kg)
Turntable Rotation	360° continuous
Turntable Tailswing	1.2 m
Drive Speed - Stowed	4.8 km/h
Drive Speed - Raised	0.8 km/h
Gradeability - Stowed	45%
Max. Wind Speed	12.5 m/s
Turning Radius - Inside	2.5 m
Turning Radius - Outside	5.5 m
Max. Slope	4.5°
Drive Mode	&quot;4W Drive
Tires Type	RT Foam-filled
Tires Size	355/55D 625
Power	Deutz D 2.9L4
Fuel Tank Capacity	100 L
Hydraulic Oil Capacity	180 L
Machine Weight	12300 kg